

3D LOGIK

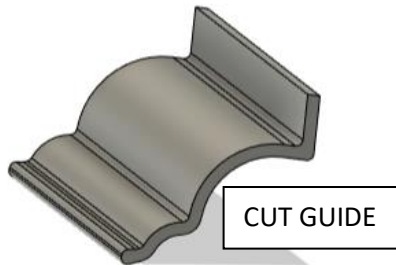
RIBKAGE INSTALLATION INSTRUCTIONS

Included:

- 18 inches Gasket material
- 3 push rivets
- Cut Guide
- Air Guide
- Air Guide Cover
- Ribkage intake cover

Tools Required:

- Sharp utility knife
- Scissors
- Silver Sharpie / New
- Pencil
- 5/16" or 8mm Drill
- Alcohol and wipes/ clean surfaces before gasket install.



3D LOGIK

RIBKAGE INSTALLATION INSTRUCTIONS



Step 1.

Remove hood and side panels.



Step 2.

Remove plastic center piece and remove OEM rivets from plastic piece.

*used in next step



Step 3.

Using OEM rivets place 3D LOGIK air guide cover in the same location as the Center plastic piece and ensure rivets have been pressed.



Step 4.

Using a 5/16" or 8mm drill bit use the 2 top holes in the air guide cover as the location to drill rivet holes.

After holes are drilled remove cover and set aside.

*using a small diameter drill bit for a pilot hole before the larger drill bit helps with install.



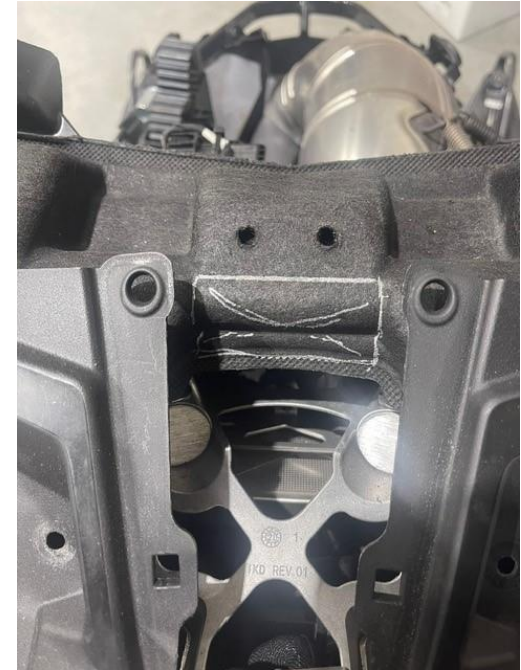
Step 5.

Remove T-40 torx bolts.

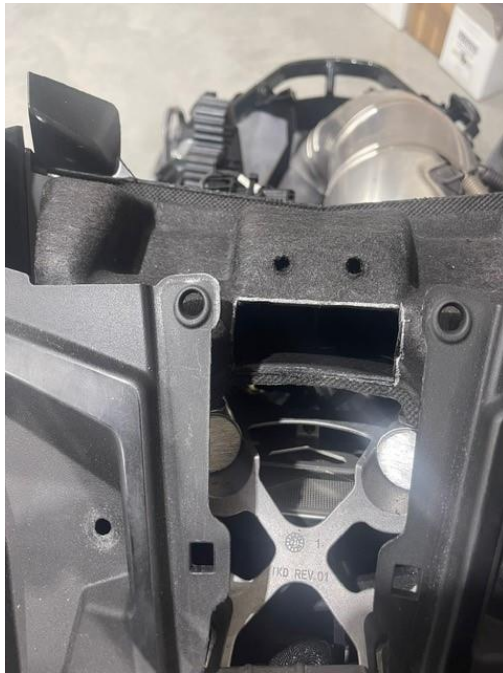
Using the supplied cut guide place onto front of airbox. The guide will contour to the airbox, ensure guide is in the center of the location.

Using a silver or white sharpie or pen trace around the outside of the cut guide.

*Help may be needed or use a spacer to open up the side panels to give better access



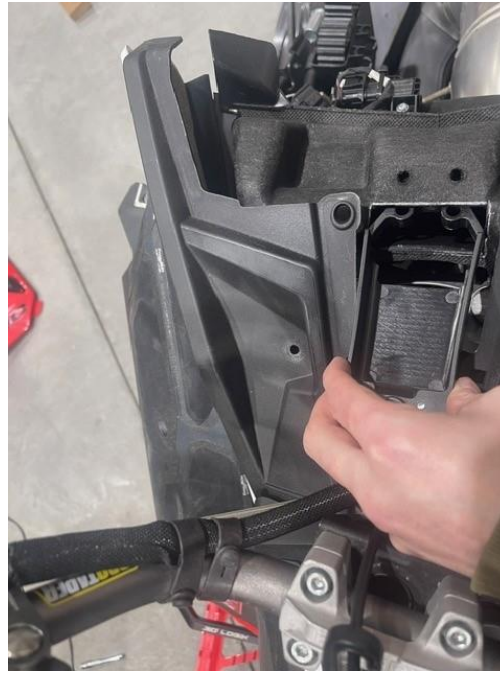
Area should look like this.



Step 6.

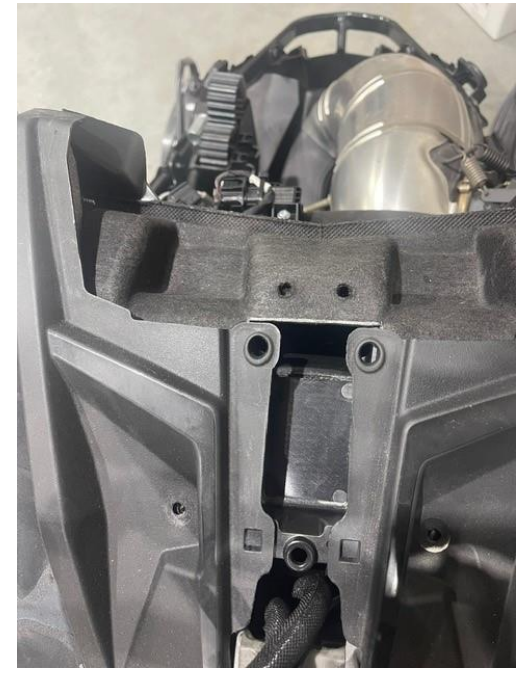
Using a sharp utility knife cut the inside of the traced line out all the way to the plastic flange of the airbox.

*clean out any foreign material with shop vac after drilling and cutting.



Step 7.

Install air guide into hole all the way until sides of guide make contact with air box.



Guide should look like this when installed.



Step 7.

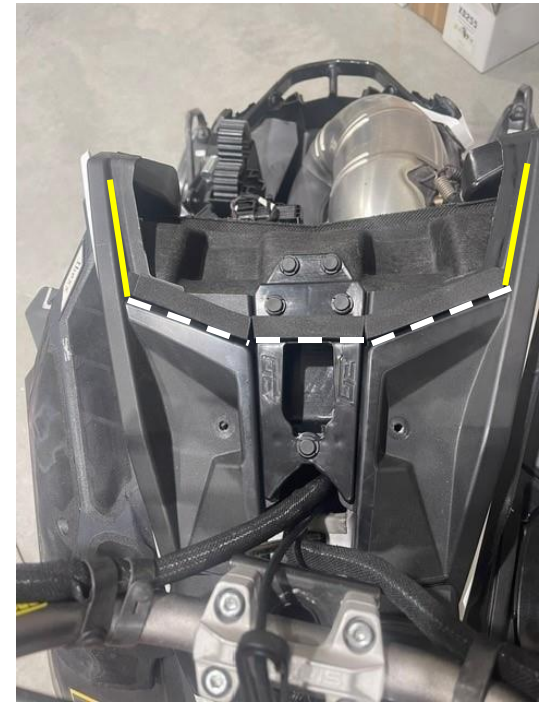
Using 3 supplied rivets as well as the 2 OEM rivets, place air guide cover into OEM location and push all 5 rivets into place.



Step 8.

Place the ribkage cover over location and using a pencil trace the back of the intake to the consol.

This is used as a guide for the gasket



Step 9.

Using supplied gasket material place along the outer raised edge of the plastic body above the intake.

Ensure the edges of the gasket are cut flush to the outer edge of the console area.



Step 9 cont.

Using supplied gasket material cut gasket to traced line from step 8 and place gasket.



Step 10.

Install Ribkage cover with OEM T40 bolts.



Step 11.

Install hood, ensure the hood cover under the display tucks under the RIBKAGE intake.

Install all panels and ENJOY!